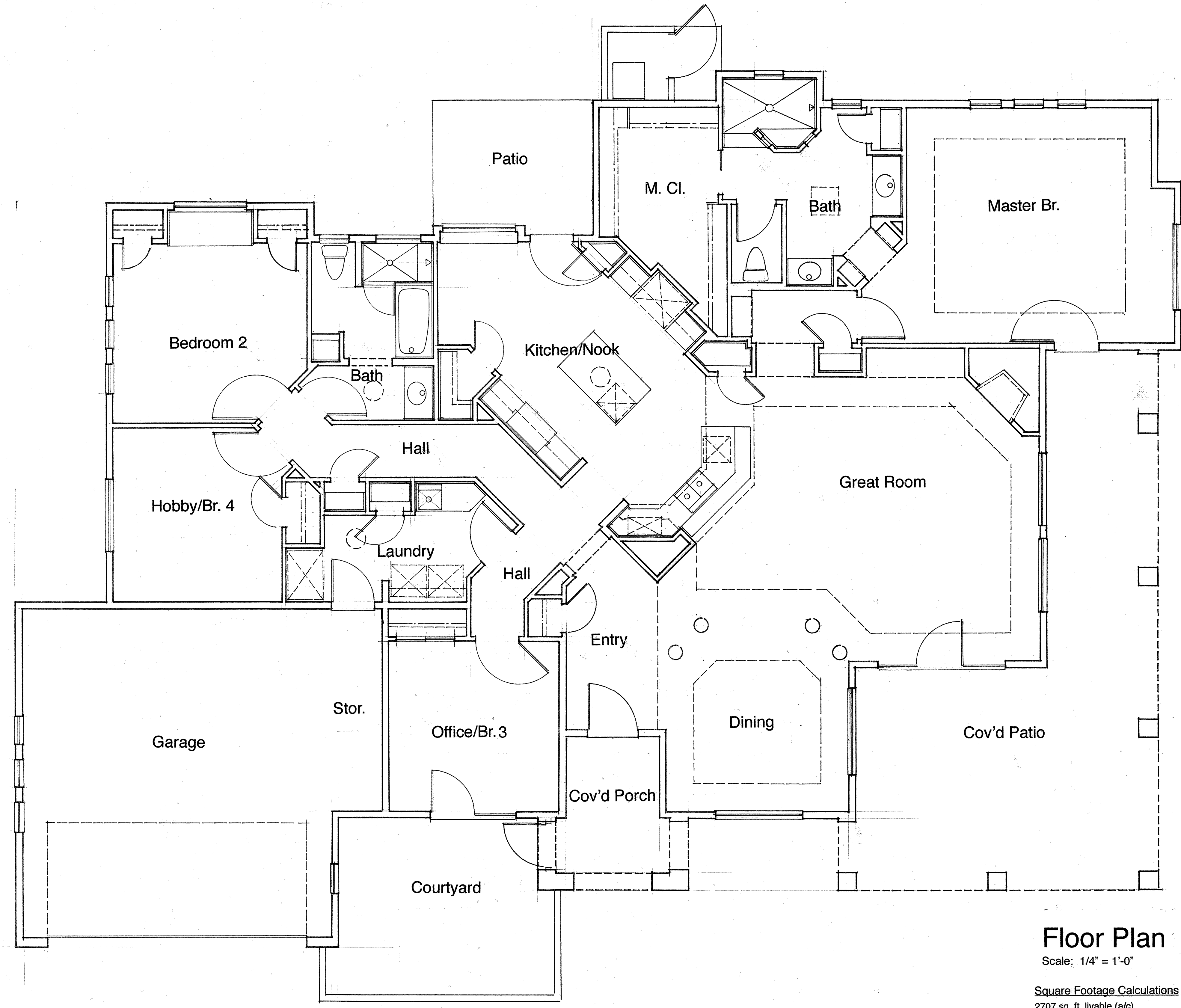




700 S. Montezuma Street
Prescott, AZ 86303
928-445-3200
1-800-553-0542
928-771-9357 Fax

This drawing is considered proprietary. It is not to be reproduced, nor is the information contained to be used to produce products, unless written consent is first obtained from Crystal Creek Homes, Inc.



Floor Plan

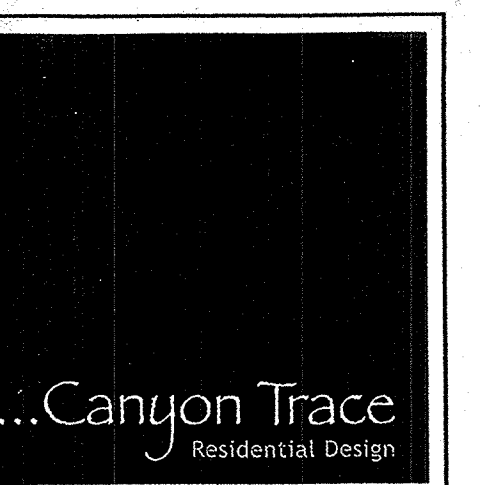
Scale: 1/4" = 1'-0"

Square Footage Calculations

2707 sq. ft. livable (a/c)
573 sq. ft. garage
87 sq. ft. cov'd porch (entry)
496 sq. ft. cov'd patio
3863 sq. ft. total covered area

Sheet title:
Floor Plan

Sheet:
of:
Date:
Revision:



Residential Design
Norman L. Bechtold
Architect (Retired)
1025 N. Cloud Cliff Pass
Prescott Valley, AZ 86314
928-237-5575 Studio
928-227-3592 Cell
shlphx@cableone.net